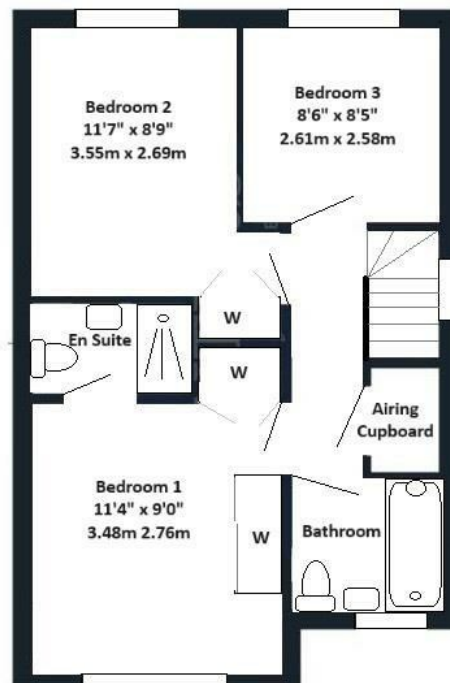
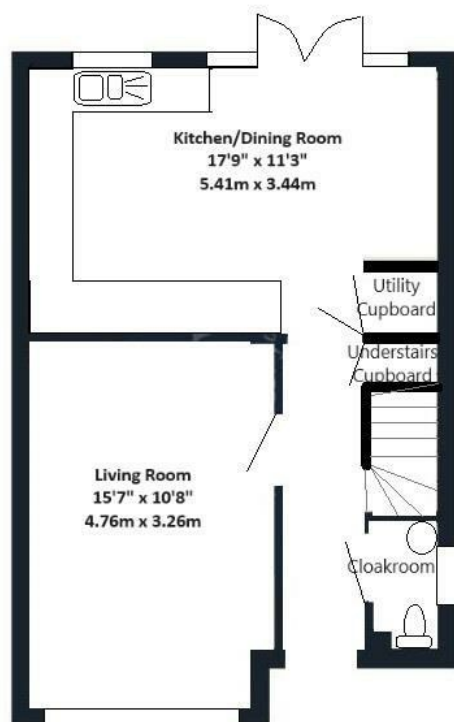




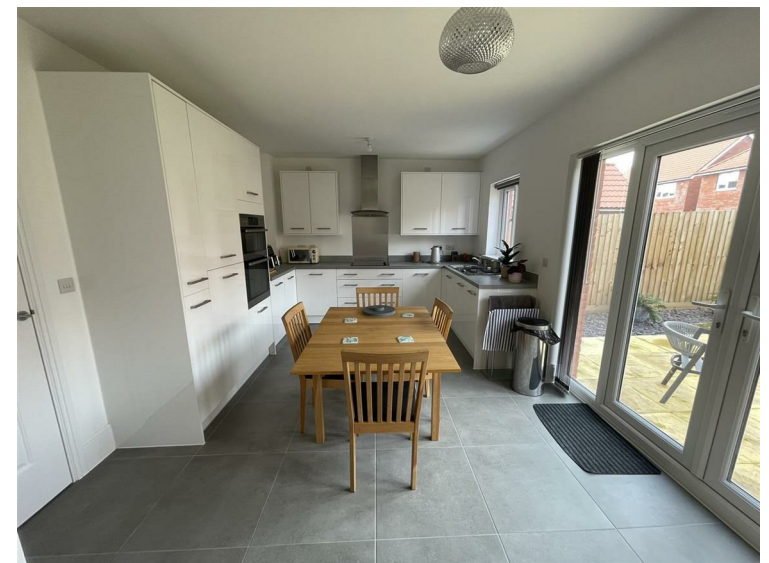
**2 SNOWDROP PLACE
LECKHAMPTON
CHELTENHAM
GL53 0FJ
PRICE £480,000**

2 Snowdrop Place, Leckhampton, GL53 0FJ



Total Floor Area approximately 885 sq ft (82.28 sq mt)





Price £480,000

Tewkesbury Borough Council

COUNCIL TAX BAND D

Freehold

A most delightful semi-detached house built in 2022 by Redrow in the popular Leckhampton area. This lovely family home is set within a small cul-de-sac with views over green space enjoying glimpses of hill views too. The accommodation offers entrance hall, cloakroom (wc), living room, fitted kitchen/dining room, three good size bedrooms (bedroom 1 with en-suite), bedroom 3 a small double and a family bathroom. The rear garden has been laid to lawn with a good size patio area, there is a garden to the front, driveway with parking and a detached garage. The property has the addition of built-in wardrobes in Bedrooms 1 and 2, plush carpeting, lovely tiled flooring to the hall, kitchen and cloakroom and the kitchen is fully fitted with oven, hob, extractor hood, dishwasher and fridge/freezer. There is also the added bonus of a utility cupboard with plumbing for a washer/dryer with ventilation, understairs storage cupboard and airing cupboard on the landing.

Viewing from 3rd September.

Conveniently located for the recently built Leckhampton High School (part of the Balcarras Trust) and with easy access to Cheltenham, Gloucester, The A40 and M5. Being on the edge of countryside this lovely home offers everything you could want in a family home. Therefore this is a MUST SEE property!

Sure Property Group

23 Bath Street

Cheltenham

Gloucestershire

GL50 1YA

01242 261222/ 241200 info@surecheltenham.co.uk







